

Technical data sheet

Product features



Freezing cabinet 700 l without compressor pastry version EN 40x60, stainless steel

Model	SAP Code	00012011
--------------	-----------------	----------

SAP Code	00012011	Net Weight [kg]	142.20
Net Width [mm]	733	Loading	230 V / 1N - 50 Hz
Net Depth [mm]	847	Gross Volume [m3]	1.445
Net Height [mm]	2090	Net Volume [m3]	1.298

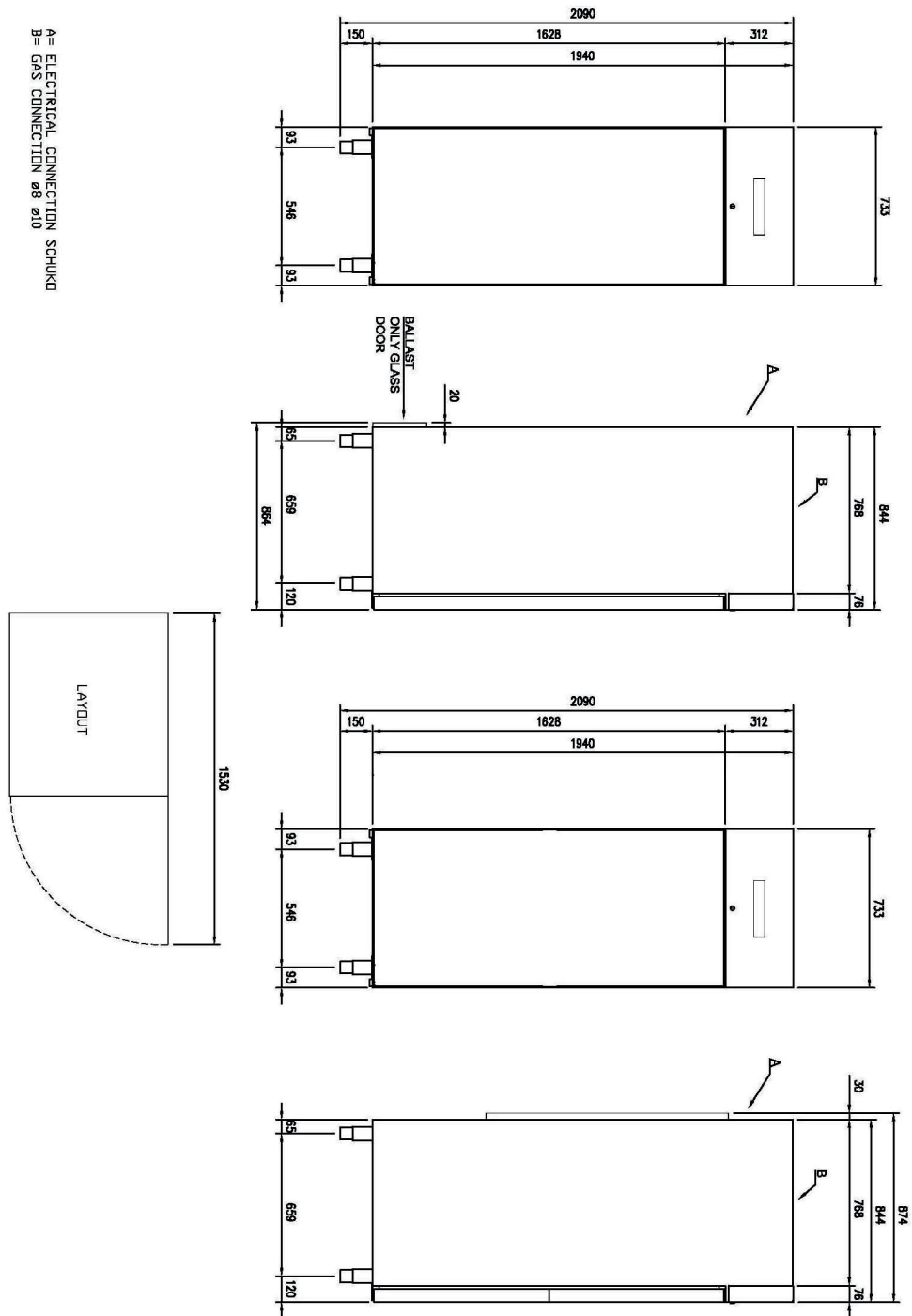
Technical data sheet

Technical drawing



Freezing cabinet 700 l without compressor pastry version EN 40x60, stainless steel

Model	SAP Code	00012011
--------------	-----------------	----------



Technical data sheet

Product benefits



Freezing cabinet 700 l without compressor pastry version EN 40x60, stainless steel

Model	SAP Code	00012011
-------	----------	----------

- 1 Insulation 90mm**
 - minimal losses
 - energy saving
- 2 Two-sided opening**
 - location variability
 - greater operational efficiency
 - better kitchen ergonomics
- 3 All-stainless design**
 - corrosion resistance
 - longer service life
 - health safety
- 4 Automatic defrosting**
 - nothing needs to be watched
 - always working properly without extra operator requirements
- 5 Wheels, legs**
 - variability
 - user comfort
- 6 High energy class**
 - minimal energy loss
 - high efficiency
 - guaranteed chilled food
 - cost saving
 - hygienic safety

Technical data sheet

Technical parameters



Freezing cabinet 700 l without compressor pastry version EN 40x60, stainless steel

Model	SAP Code	00012011
-------	----------	----------

1. SAP Code:

00012011

2. Net Width [mm]:

733

3. Net Depth [mm]:

847

4. Net Height [mm]:

2090

5. Net Weight [kg]:

142.20

6. Gross Width [mm]:

763

7. Gross depth [mm]:

873

8. Gross Height [mm]:

2170

9. Gross Weight [kg]:

157.20

10. Device type:

Electric unit

11. Loading:

230 V / 1N - 50 Hz

12. Min ambient temperature [°C]:

10

13. Max ambient temperature [°C]:

43

14. Device properties 2:

Bakery

15. Gross Volume [m3]:

1.445

16. Net Volume [m3]:

1.298

17. Adjustable feet:

Yes

18. Unit:

No